

## euroclust splice ready 1U patch panels E2K

### Field of application

euroclust splice ready patch panels can be used everywhere is using 19" installation system, from MAN to WAN networks. Through „splice ready“ status by delivery, save time for installers what is especially important in datacenter maintenance, but also by all installations. With standard adapter can be also used in ETSI system. Available in SM APC.

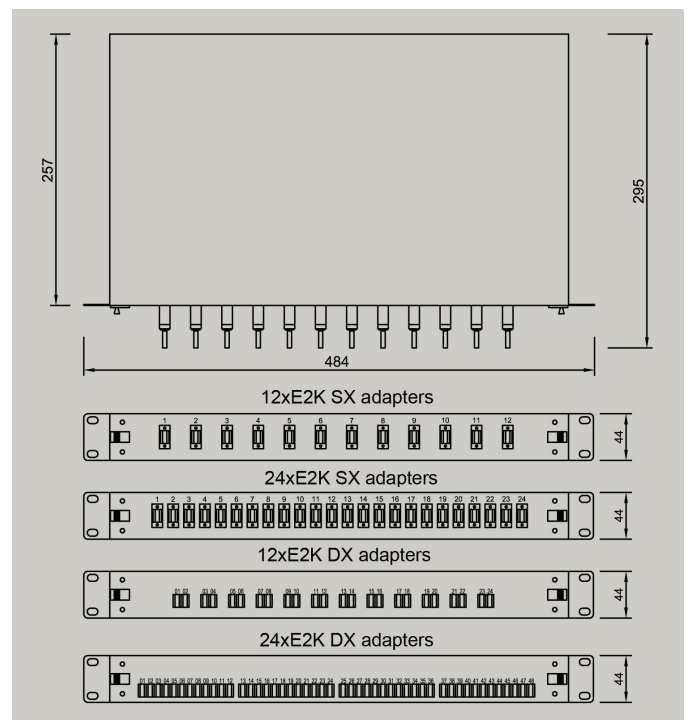


### Features

- Splice ready assembly – ready for splicing
- 1U version in standard RAL 7035 color, installation depth 250mm
- Patch panel with sliding drawer with hand latches for automatic lock in closed position
- Variable cable entry plates, as standard with angled cable entry
- 4 types of front plates - for SX 12 and 24 cut outs and for 12 and 24 duplex adapters
- Splice cassette – comfortable type ec2 in white color with two 12 position shrink holders as standard (crimp on request)
- Assembly with all modes available SM APC
- 12 colors fibers according DIN as standard
- Assembly standard Grade B

### Technical information

Patch panel color	RAL 7035
Dimensions LxWxH (mm)	484x295x44
Packing dimensions (mm)	505x325x48



	E2K SX		E2K duplex	
	12 simplex adapters	24 simplex adapters	12 duplex. adapters	24 duplex. adapters
	12 pigtails	24 pigtails	24 pigtails	48 pigtails
Weight netto	3,35kg	3,50kg	3,45kg	3,70kg
Weight brutto	3,60kg	3,75kg	3,70kg	3,95kg
Quantity of splice cassettes	1	1	1	2
Front plate type	12 SX cut outs	24 SX cut outs	12 DX. cut outs	For 24 DX. adapters

	SM APC
Color of adapter/connector	Green
Grade assembly class <sup>1)</sup>	Grade B/3

1) According ec Quality Grade Classification

### Description

Splice ready assembled patch panel is ready for splicing. Adapters are mounted and fixed to frontplate with screws. Adapters are with plastic body and zirconia sleeve with white dust caps. Pigtails are 2,5m long inserted in adapters, routed with twistors, and fibers are fixed into splice cassette. Last app. 96cm of 0.9mm jackets are stripped out into 250um fibers are in same 12 colours as 0,9mm jacket. Standard color coding is DIN, another on customer request. Assembly available in SM APC.

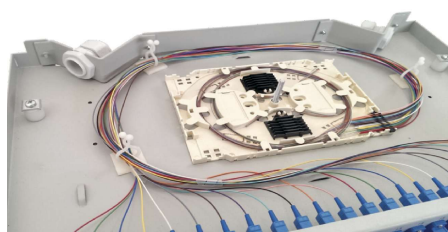
## euroclust splice ready 1U patch panels E2K

Splice cassette ec2 type in white colour offer enough space for spicing 24 fibers in one cassette. Fibers are fixed with splice comb. And each splice cassette can hold two splice protection holders. As standard is cassette equipped with two 12-positions holders for shrink splice protectors. On request crimp holders are available.

Patch panel body is produced of steel with structured powder coating in RAL 7035. Drawer with adjustable position of cassette holder. Depending from quantity of adapters per patchpanel is used one of 4 types of front plate 12 and 24 SX cut outs and for 12 and 24 duplex adapters. Patch panel allow to use various cable entry types. Angular with one cable gland, straight with two diferent glands, or straight without gland – closed. 1U patch panel have two cable entry plates. Standard execution is with one angular PG13.5 and one angular PG16 cable entry plate. Other types and combination on customer request, see accessories list. For more information about colour coding or fiber specification please see euroclust fibre and colour code specification.

### Ordering information Grade B:

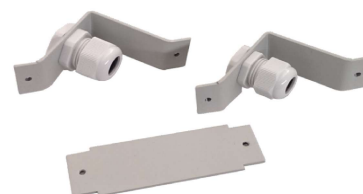
	E2K		E2Kcompact	
	12 simplex adapters	24 simplex adapters	12 duplex adapters	24 duplex adapters
	12 pigtails	24 pigtails	24 pigtails	48 pigtails
SM APC E9/125	EC12.202U1C.DJ2-AB	EC12.202U1H.DJ2-AB	EC12.20LX1C.DJ2-AB	EC12.20CX1H.DJ2-AB



Pic. 1: Standart assembly of patch panel



Pic. 2: Patch panel with managment tray



Pic. 3: Cable entry plates

### Accessories list:

	ec number
Management tray	EC03.101010.023
Cable entry plate straight blind	EC03.101030.001
Cable entry plate PG9 with polyamide cable gland	EC03.101030.025-G
Cable entry plate PG11 with polyamide cable gland	EC03.101030.011-G
Cable entry plate PG13,5 with polyamide cable gland	EC03.101030.013-G
Cable entry plate PG16 with polyamide cable gland	EC03.101030.016-G